

INTRODUCTION

Single Pole Connectors



49 Series Connectors

49M (Male Contacts) and 49F (Female Contacts)

Rhino-hide connectors include a male or female contact with a TPV insulator and dust cap. Choose male contacts for the power side of the circuit or female contacts for the motor load side of the circuit. To prevent separation of the connectors, select a color-coded in-line coupler from Rhino-hide accessories.

Available colors: Black (E), White (W), Red (R), Blue (B), Green (G), Yellow (Y), Orange (O), Brown (H), Purple (P) & Gray (GY)*. See pages 7 & 8 for technical and ordering information.



49 Series Accessories

Couplers, dust caps, ground pins and replacement parts such as contacts, insulators and housings are available for both connectors and panel mounted receptacles. For complete details, see the Rhino-Hide accessories and replacement parts section.

See page 11 for ordering information.

* Not all colors available in all configurations, see ordering information page

FEATURES & BENEFITS

Male and Female Connectors



■ Color-coded connector insulator for quick, visual identification of circuit and phase connections. Available colors include: Black, White, Red, Blue, Green, Yellow, Orange, Purple¹, Gray² and Brown³

■ UV stable, TPV insulator resists fading and cracking for greater service life

■ Ideal for replacement; connectors mate with other manufacturers' high-amperage single pole connectors and receptacles for fast, easy change-out

■ Contacts machined from a high conductivity copper alloy and silver-plated for corrosion resistance and superior conductivity

■ Connectors deliver up to 1,135 Amps continuous duty

■ Male contact tip is over-plated with gold

■ TPV dust cap protects contacts when disconnected

■ Contacts offered by cable size for the most secure connection. Each contact is designed for a specific cable size ranging from 313 MCM through 777 MCM

* For additional colors, consult factory.
¹Select configurations only.
²See ordering information for details

Coupler

■ Color-coded, metal in-line coupler prevents separation of connectors and identifies phase

UL/CSA 1691 Compliant

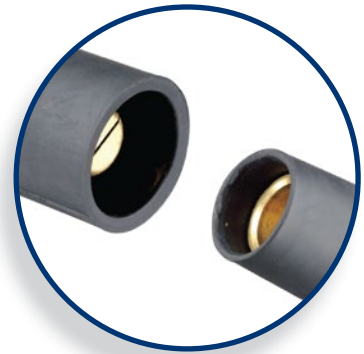
rhino-hide[®] Single Pole Cam-Type Connectors

For applications up to 400A, 600V AC or DC

Color-coded insulating sleeves for easy phase identification



High conductivity—positive, vibration-proof connection provided by double cam design



Shatter and crack proof—high durometer thermoplastic elastomer (TPV) or neoprene rubber

Self compensating for wear—slit in male contact provides spring action for longer usage

Hard thermoplastic assembly screw provides strength and durability

Intermateable with competitive cam-type products—can be retrofitted to existing locations and power distribution systems

Common Applications

- Sports, Entertainment and Movie Industry
- Theme Parks and Carnival Equipment
- Concert Venues and Convention Centers
- Motor and Generator Splices
- Mining Operations
- Welding and Construction Sites
- Commercial and Navy Shipbuilding/Repair
- Petrochemical and Manufacturing Plant Turnarounds
- Numerous Other Temporary Power Applications