

FLUKE.

Fluke View Forms Software

Expand the power of the world's
most rugged test tools

FlukeView Forms Software with cable

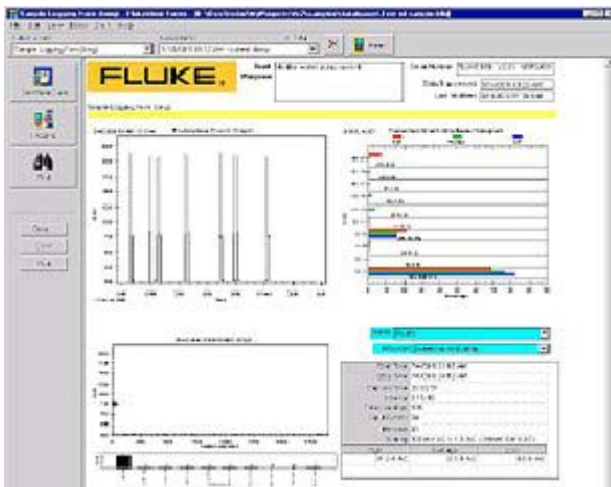
To address the increasing demands for reporting and documentation, Fluke presents FlukeView Forms documenting software. FlukeView Forms increases the power of your Fluke Digital Multimeter, Thermometer and ProcessMeter by enabling you to document, store and analyze individual readings or series of measurements, then convert them into professional-looking documents.



Technical Data

With FlukeView Forms documenting software, the logging capabilities of handheld test equipment can be used to solve tough problems. You can download the readings from meters into FlukeView Forms to spot trends and document measurement data. Professionals can instantly review and compare data from up to 8 different meters on the same document - providing analysis capabilities that a meter alone can't provide.

FlukeView Forms communicates with supported meters fast and easily via an infrared serial interface. The software will automatically recognize your meter and transfer the data without any configuration.



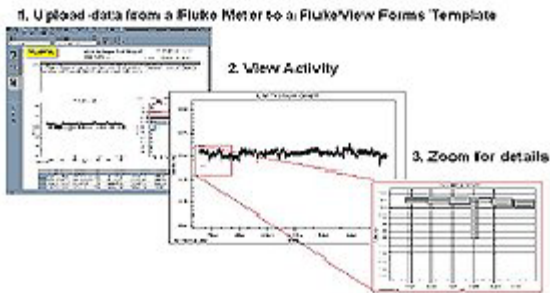
And it's easy to use.

FlukeView Forms comes with standard analysis and reporting forms. Additionally, you can customize reports for your own analysis and reporting needs. Information stored in Fluke's software can be exported to other common programs.

Using FlukeView Forms with meters

With the Fluke 180 Series (except the Fluke 187), 89 Series-IV, and 53/54 Series-II, you can measure and store hundreds of readings to the meter's internal memory, and then later download the information to FlukeView Forms

Typical Logging Application



FlukeView Forms also logs events to make analyzing your data easier. This unique method of data recording provides more detailed readings when the input signal changes significantly. The amount of signal change that will trigger an event can be adjusted to fit your specific test situation. The minimum, maximum and average of readings are recorded for each event. Logging sessions can also be configured so that data will be recorded over specific intervals (e.g., every 5 minutes or 30 seconds).

Using FlukeView Forms with Fluke 1653 Installation tester

Up to 500 test results can be stored in the Fluke

1653 installation tester. The data stored for each measurement consists of the test function, user selectable test conditions and unique references.

The results can be uploaded for preparing professional reports. These reports can easily be customized to suit individual requirements as well as compliance with local regulations.

Standard formats as well as localized forms for Germany (ZVEH), Austria (ÖVE) and Switzerland (electrosuisse, gem. NIV) are also available (see Home ► Quick link ► Add-ons & update).

Version history FlukeView Form

Release 2.1

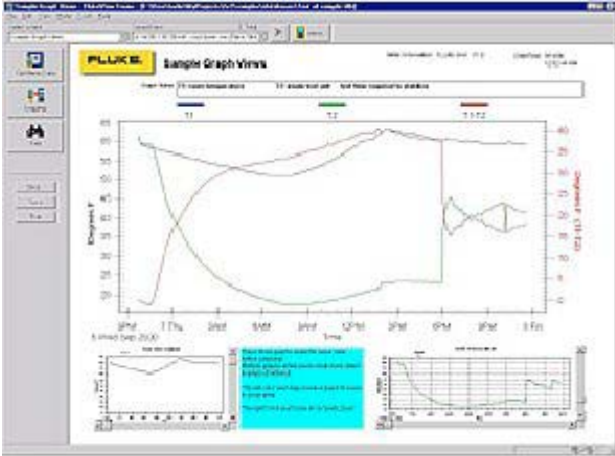
- Display logged readings from multiple meters on one graph: Readings logged from multiple meters can be viewed on a single logged readings graph. This allows data collected at different times to be compared.
- Forms and data can now be copied between FlukeView Forms databases: Databases can now be easily managed so that they contain only the data you want them to.
- Fluke 789 Support: The Fluke 789 ProcessMeter™ is now fully supported.
- Tables for Display Readings can now be extensively customized: The order of the columns and the number of readings displayed per row can be changed, and custom user annotation columns can also be added.
- FlukeView Forms 2.1 is backwards-compatible with data created by previous versions of FlukeView Forms.
- The software and documentation are localized to English, Spanish, French, German, Italian, Japanese and Simplified Chinese.

Release 2.2

- Added support for Fluke 1653 (see also add-ons & updates)
- Possibility to use localized forms for Germany (ZVEH), Austria (ÖVE) and Switzerland (electrosuisse, gem. NIV) (see Home ► Quick Link ► Add-ons & update)



Example Reports:



FlukeView Forms supports the following meters:

- Fluke 180 Series Digital Multimeters (Model FVF-SC2)
- Fluke 87-IV & 89-IV Digital Multimeters (Model FVF-SC1)
- Fluke 53-II & 54-II Thermometers (Model FVF-SC1)
- Fluke 45 Bench Meter (Model FVF-SC3)
- Fluke 789 ProcessMeter™ (Model FVF-SC2)
- Fluke 1653 (Model FVF-SC2 release 2.2 and higher)

Operating System Requirements:

Windows 95, Windows 98, or Windows Me, Windows NT 4.0, Windows 2000, or Windows XP

Minimum PC Requirements:

- Pentium class or better microprocessor
- 32 MB RAM
- 70 MB hard disk space (100 MB to install)

