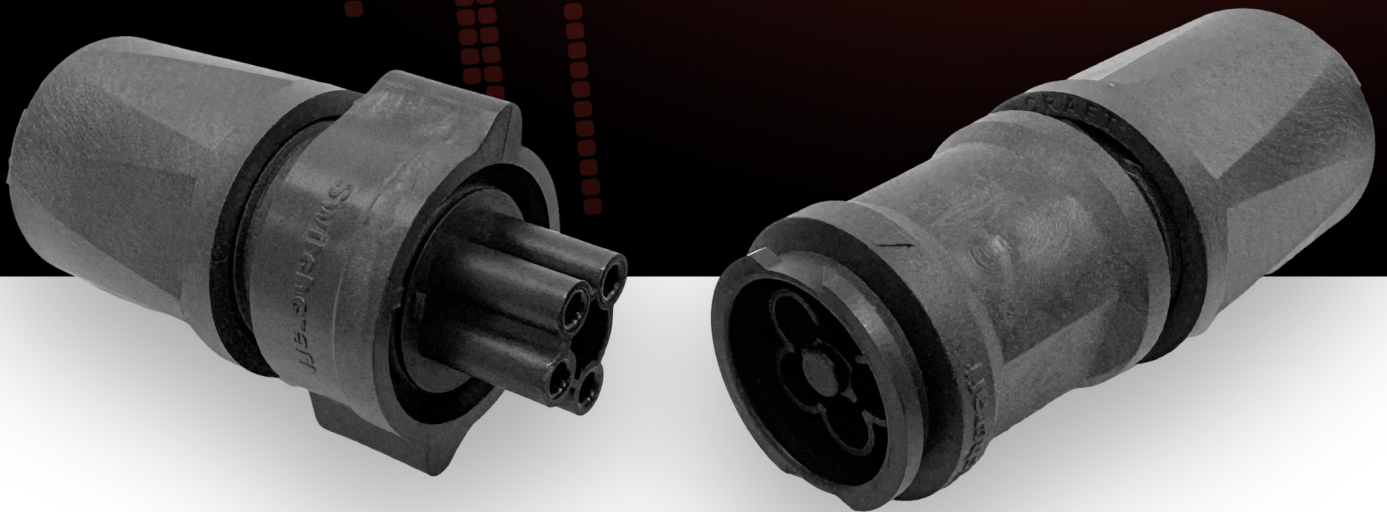


EP7 SERIES

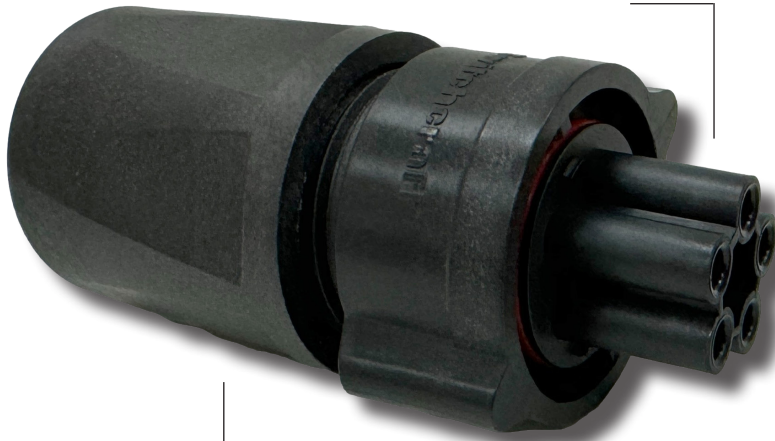
30 AMP POWER CONNECTORS



Switchcraft[®]
CONXALL[®]

HARSH ENVIRONMENT CONNECTIVITY SOLUTIONS

3, 4 or 5 pin configurations including protective earth ground contact.



Rugged housing using high-temp, UL f1 rated materials

Insta-Click™ spring loaded latching mechanism locks automatically

Easy field installation with screw terminal contacts, accepting up to 10awg wires



Panel mount receptacles, cable-to-cable in-line connectors, or custom overmolded cables available with male or female contacts

NEW PRODUCT

The new EP7 series is a new line of connectors designed specifically for higher current applications. Large contacts with screw terminals are ideal for heavy-duty wire up to 10awg, while a unique insert design protects the user while maximizing the isolation of each pole. A large backshell with rugged chuck-style strain relief accommodates a wide range of cable diameters and the Insta-Click positive lock makes connecting and disconnecting as simple as possible. Custom overmolded cable assemblies are also available.

IP68
RATED WATER
RESISTANCE

The EP7 series is fully sealed to meet both IP68 and IP69K for harsh environments

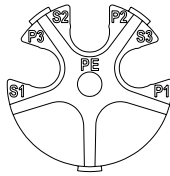
30 AMP
CURRENT
RATING

A special high-PBT material provides excellent UV resistance for outdoor use and lighting applications

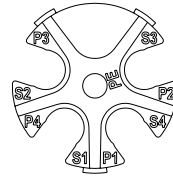

**MADE IN
USA**

Made in USA to the high standards that have made Switchcraft the leading name in power connectivity

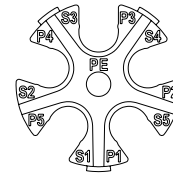
CONTACT LAYOUTS (REAR/WIRING SIDE SHOWN)



3-POLE

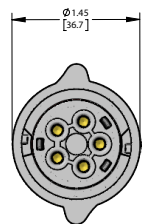


4-POLE

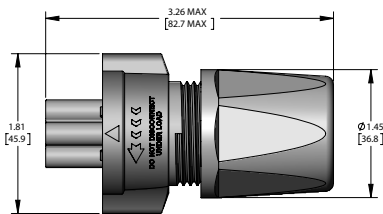


5-POLE

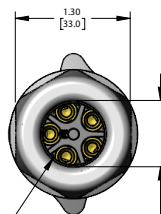
DIMENSIONS



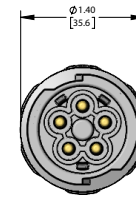
EP7CSF10C SHOWN HERE



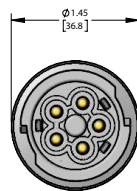
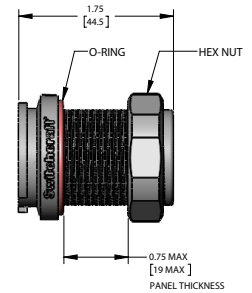
GROMMET I.D.:
SIZE A: 0.500 [12.7] DIA.
SIZE B: 0.600 [15.2] DIA.
SIZE C: 0.700 [17.8] DIA.



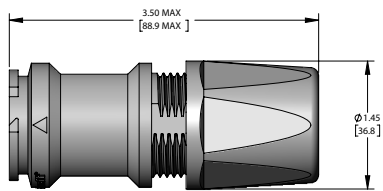
BACK NUT I.D.:
Ø 0.75 [19.0]
Ø 0.65 [16.5]



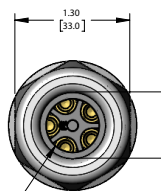
EP7PSM10 SHOWN HERE



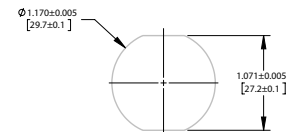
EP7LSM10C SHOWN HERE



GROMMET I.D.:
SIZE A: 0.500 [12.7] DIA.
SIZE B: 0.600 [15.2] DIA.
SIZE C: 0.700 [17.8] DIA.



BACK NUT I.D.:
Ø 0.75 [19.0]
Ø 0.65 [16.5]



RECOMMENDED PANEL CUT-OUT

ORDERING CODE

EP7 10

EP7 SERIES

C - CABLE-END CONNECTOR
P - PANEL MOUNT CONNECTOR
L - CABLE-TO-CABLE CONNECTOR

OF CONTACTS:
3-5 #10

GENDER:
M - PIN (MALE)
F - SOCKET (FEMALE)

CLAMP SET PER CABLE O.D. RANGE:
A - 0.375 - 0.500 [9.5 - 12.7]
B - 0.500 - 0.600 [12.7 - 15.2]
C - 0.600 - 0.700 [15.2 - 17.8]
[LEAVE BLANK FOR PANEL]

CONTACT SIZE - (WIRE SIZES):
10 - (10, 12, 14 AWG)

SPECIFICATIONS

MECHANICAL:

Mating / Locking Type:	Spring activated positive lock
Life:	400 insertion/ withdrawal cycles minimum
Operating Forces:	10lb [44.5 N] maximum insertion or withdrawal
Vibration:	Mil-Std 202G method 201A
Panel Hex Nut Torque:	12 in-lb [1.36 Nm] maximum
Cable Securing System:	Threaded-on clamp

ELECTRICAL:

Voltage Rating:	600 V AC/DC (tested per UL2238)
Minimum Test Voltage:	2200 V rms
Current Rating:	30A at 85°C max operating temperature 25A at 100° C max operating temperature 20A at 110° C max operating temperature (based on 10awg wire, see drawing for details)
Insulation Resistance:	1000 MΩ minimum
Contact Resistance:	10 mΩ typical

ENVIRONMENTAL:

Temperature Limits:	-40°C to +135°C (-40°F to +275°F)
Operating Temperature:	Refer to drawing for detailed information
Moisture Resistance:	Mil-Std 202G method 106G
Insulation Resistance:	Mil-Std 202G method 302 condition B
Thermal Shock:	Mil-Std 202G method 107G
Salt Atmosphere :	Mil-Std 202G method 101E condition A
Ingress Protection :	IP66, IP67, IP68 per IEC60529 IP69K per DIN 40050-9, NEMA 250 6P

MATERIAL:

Outer Shell (Insulator):	Thermoplastic (PA)
Hardware:	Thermoplastic (PA)
Seal Grommets:	Thermoplastic Elastomer (TPV)
Seal O-rings:	Thermoplastic Elastomer (VMQ)
Electrical Contacts:	Copper Alloy, gold plated
Spring, Terminal Screw:	Stainless Steel